

SMARTC. COMPANY

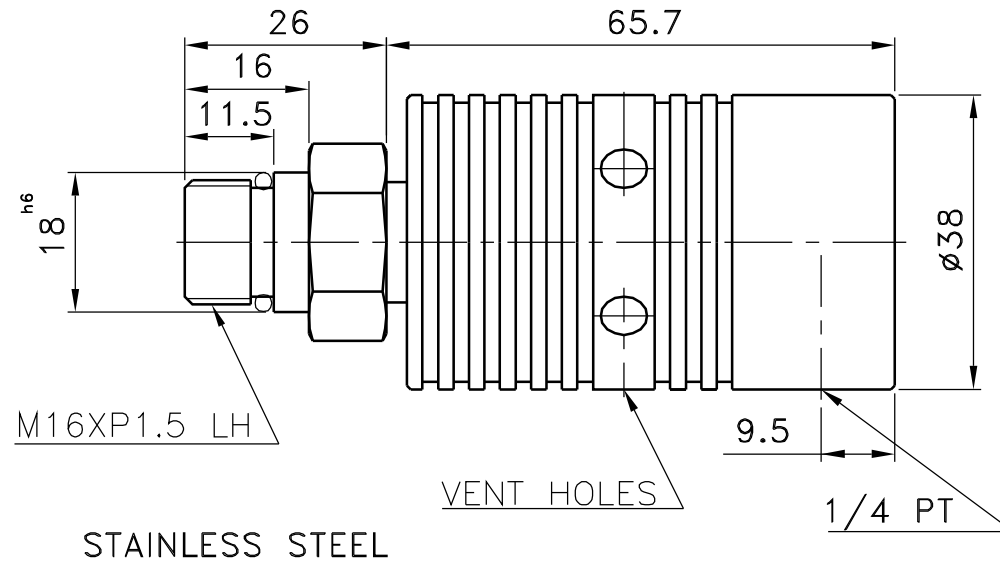
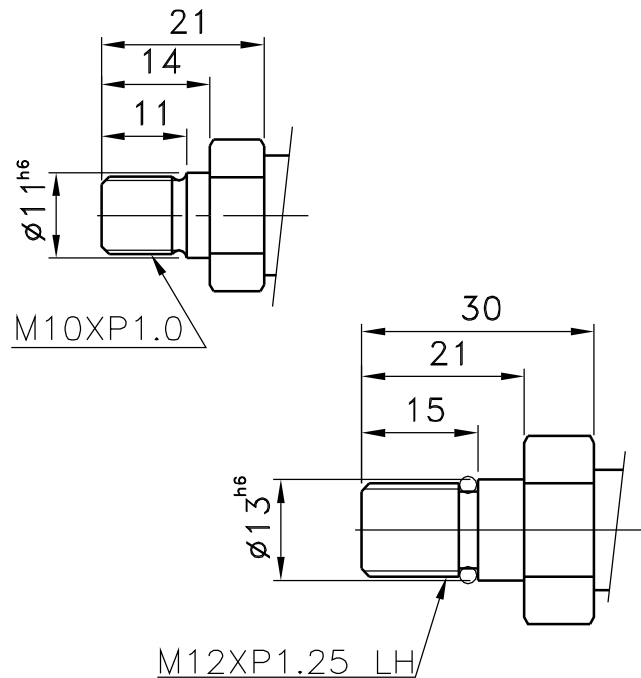
AU2000

AU-200S-7

BEARING SUPPORTED UNIONS

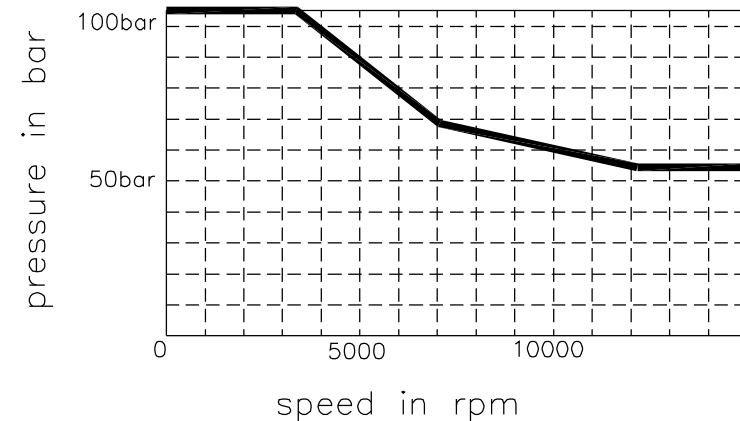
ROTATING UNIONS FOR CNC MACHINING CENTERS

ALUMINUM HOUSING  
WITH COOLING FINNS



### OPERATING DATA

M16XP1.5 LH    MAX. RPM    15000  
M12XP1.25 LH    MAX. RPM    15000  
M10XP1.0-R    MAX. RPM    12000  
MAX. PRESSURE    105 bar  
MAX. TEMPERATURE    120°C  
DRY RUN  
FILTRATION 60  $\mu\text{m}$



<http://smartc.company>