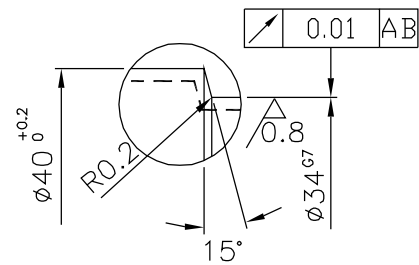
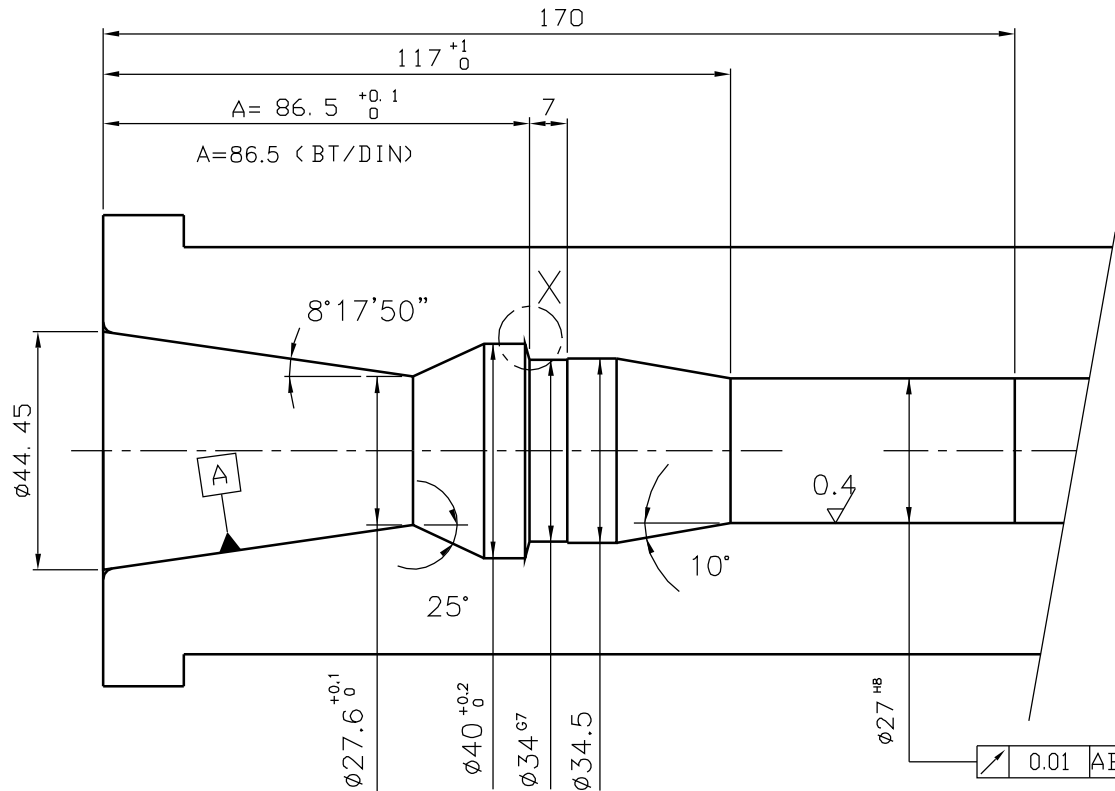


Spindle inside contour



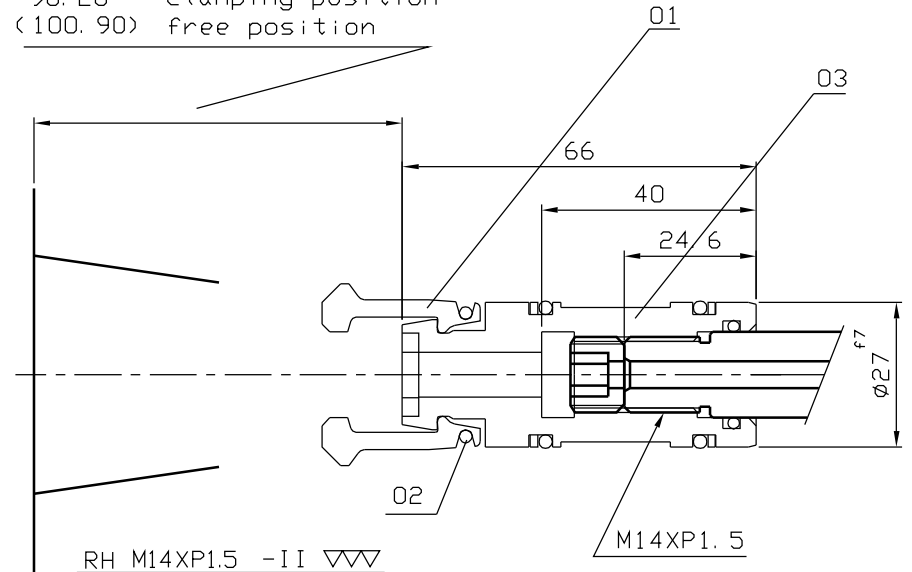
HRc 60±2°
Eht. min 1mm

DETAIL X

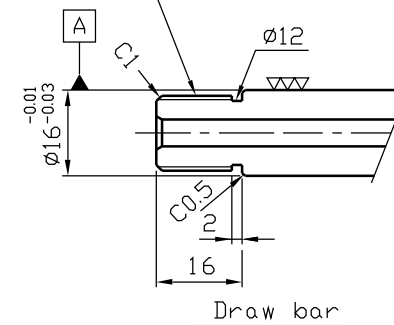
ISO 7388/1/2 TYP A

DIN 69871/2 SK40

93.40 opening position
98.20 clamping position
<100.90> free position



RH M14XP1.5 -II ▽▽▽



Draw bar

<http://smarc.com>

4BD1001/2 DIN 69871/2 SK40 ISO 7388/1/2 TYP A
ID. NO. 1284001 銳角去除

處	理	備	註	材	質	硬	度	第三角法	比	例	台	件	設	計	日	期
						RC			1/1	1			H. J.		03/03/2	
						S.M.		圖號	1284001		ROHM					