

SMARTC. COMPANY

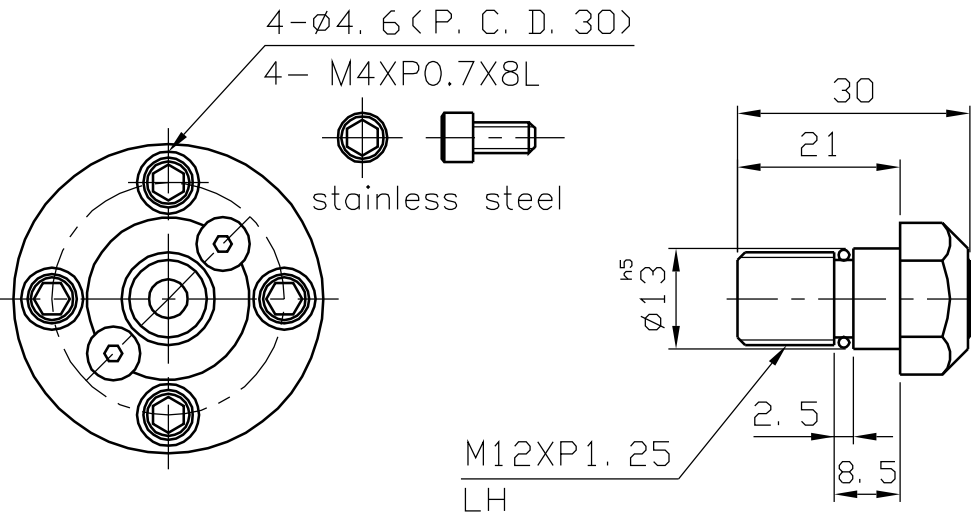
EU2000

EU-200-12

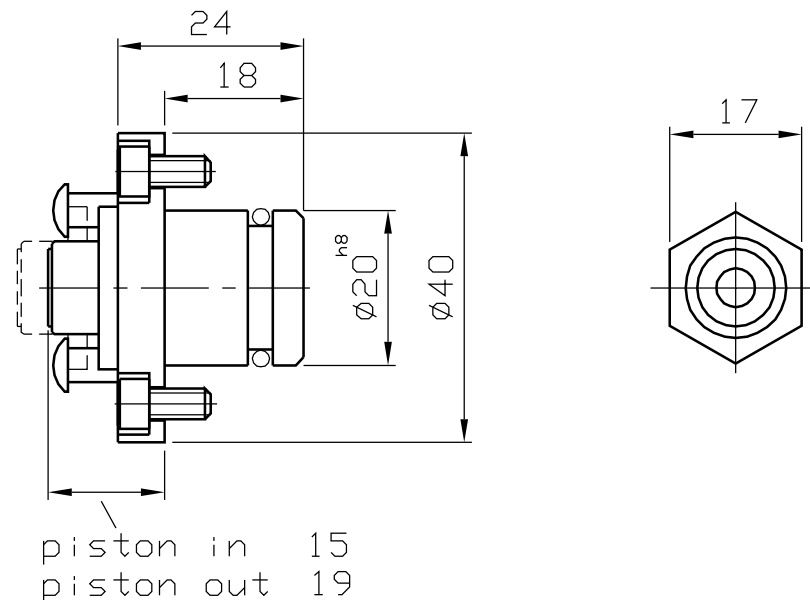
BEARINGLESS UNIONS

ROTATING UNIONS FOR CNC MACHINING CENTERS

ALUMINUM HOUSING



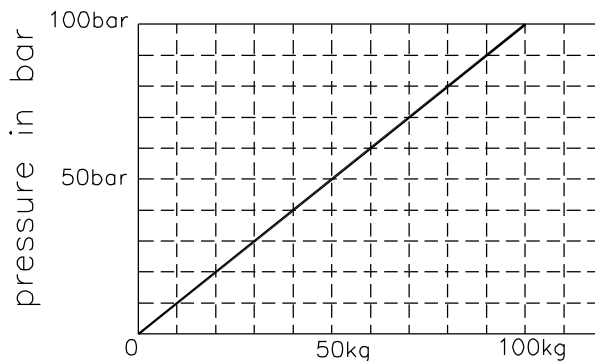
STAINLESS STEEL



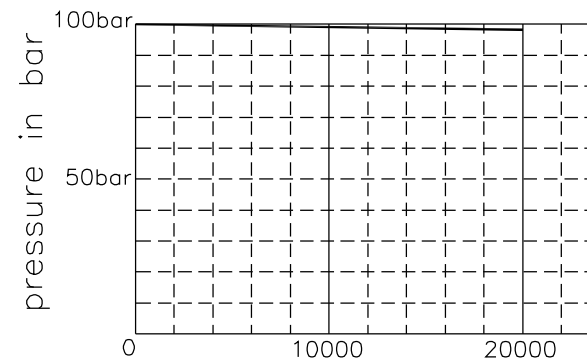
piston in 15
piston out 19

OPERATING DATA

M12XP1.25-LH
 MAX. RPM 20000
 MAX. PRESSURE 100 bar
 MAX. TEMPERATURE 110°C
 DRY RUN
 FILTRATION 20 µm
 seal closing requirement :
 MIN. PRESSURE 2 bar
 MIN. FLOW RATE 8 L/min



axial force



speed in rpm

<http://smartc.company>