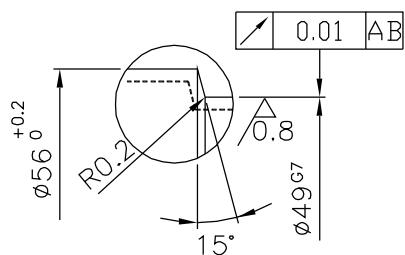
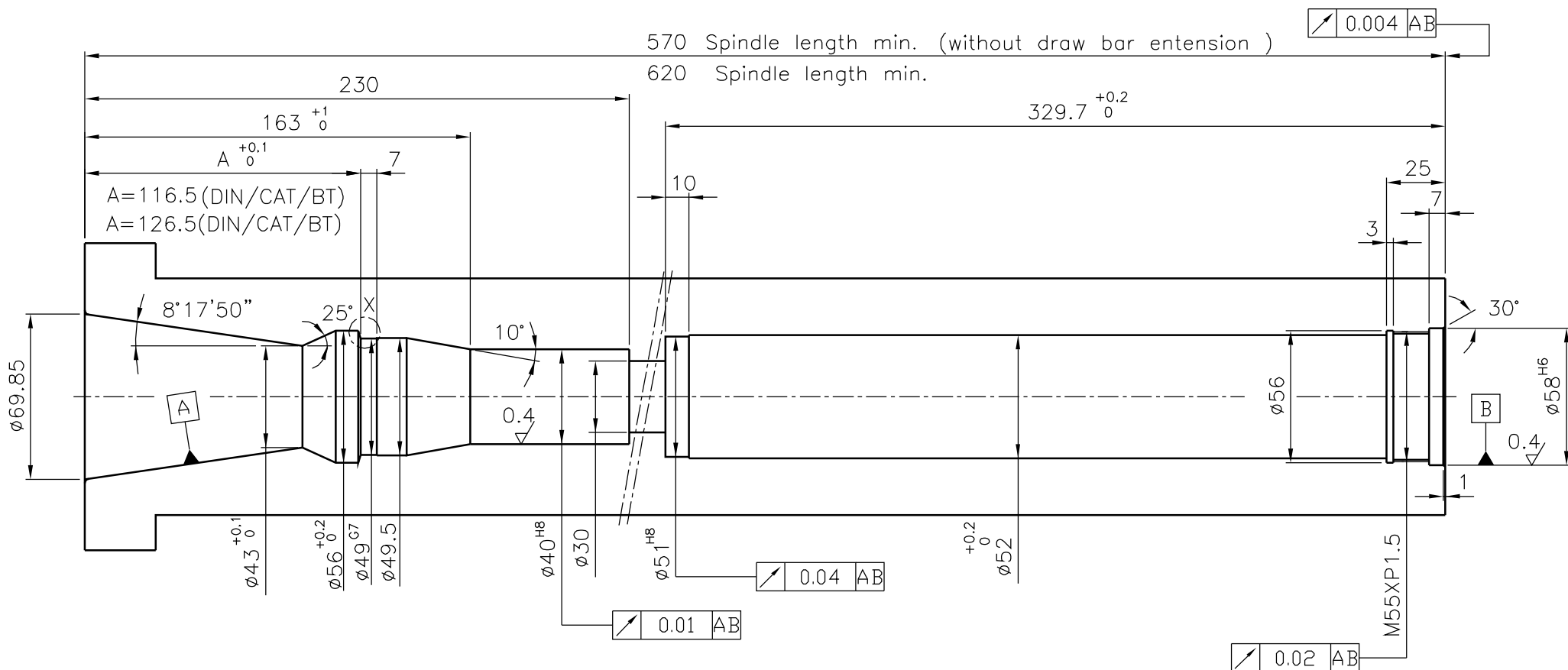


# Spindle inside contour



DETAIL X  
 HRC 60±2°  
 Eht. min 1mm

<http://smartc.company>

銳角去除

| 處 理         | 備 註      | 材 質 | 硬 度 | 第三角法 | 比 例                 | 台 件 | 設 計  | 日 期     |
|-------------|----------|-----|-----|------|---------------------|-----|------|---------|
|             | 50spind4 |     | RC  |      | 1/2.5               |     | H.J. | 00/6/22 |
| <b>S.M.</b> |          |     |     | 圖 號  | <b>50SPINDLE-04</b> |     |      |         |

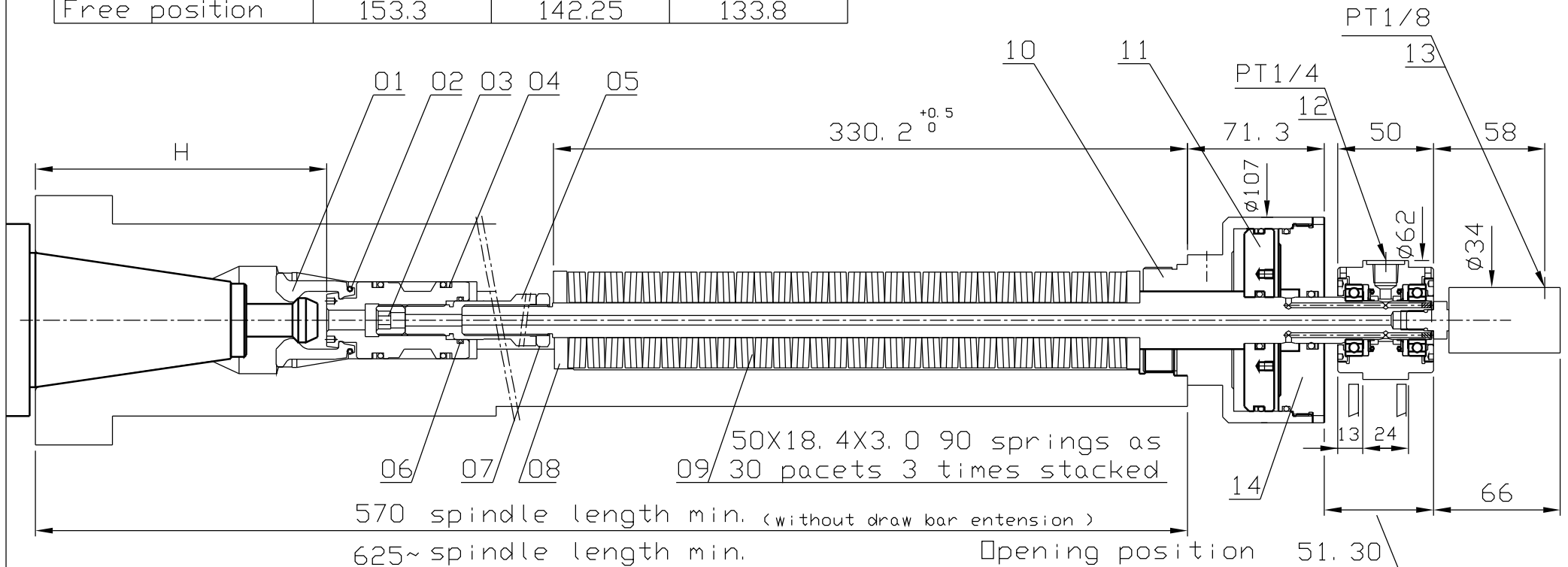
# 50PSTB/1750

50PS3010

Id. no.

Com. no.

| H                 | MAS BT | DIN 69871/69872 | CAT   |
|-------------------|--------|-----------------|-------|
| Opening position  | 145.80 | 134.75          | 126.3 |
| Clamping position | 151.60 | 140.55          | 132.1 |
| Free position     | 153.3  | 142.25          | 133.8 |



Spring arrangement triple

Pull force

17500 N

speed

8000 rpm

opening force

50 bar (min.) (only when non-rotating)

coolant lubrication

max. 80 bar

air

max. 10 bar

total clamping stroke

7.3 mm

ejection stroke

1mm

Opening position 51.30

Clamping position 56.90

free position 58.60

PATENTED

**QUICK unclamping  
clamping**

<http://smartc.company>

S.M.

date

00/8/25